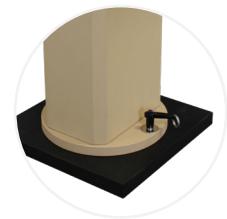
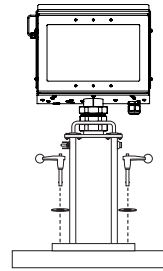


# Quick Start Guide

## AV-SSFL

Thank you for purchasing this product. This guide will provide you with a brief summary of the steps involved in deploying the Sequenced Flashing Light (SFL).

Follow the steps appropriate for the power options provided with your system.



Fixture Shown Installed on Mounting Tile

### Step 1: Assemble SFLs

- Unpack light heads and bases (stored separately).
- Insert the light head into the coupling on top of SFL base. Tighten couplings.
- Connect the cable from the light head to top of the base.

### Step 2: Install SFLs

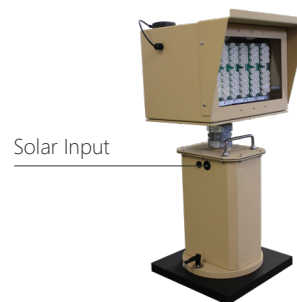
Position SFLs in desired locations on the airfield based on their Approach group and light number. Refer to the Approach Lighting Installation & Service Manual for airfield deployment instructions.

Light fixtures can be installed on Avlite supplied Mounting Tile, Frangible Concrete Mount or Frangible Stake Mount.



### Step 3: Connect AC

Connect AC input cables to the input connectors on the light chassis.



### Step 4: Connect to Solar

If applicable, connect the solar panels to the Solar Input on the other side of the chassis.

### Step 5: Turn the Battery ON/OFF Switch to ON



For the full manual, visit the link below:

[avlite.com/product/stand-alone-sequenced-flashing-light-av-ssfl/](https://avlite.com/product/stand-alone-sequenced-flashing-light-av-ssfl/)