

Quick Start Guide

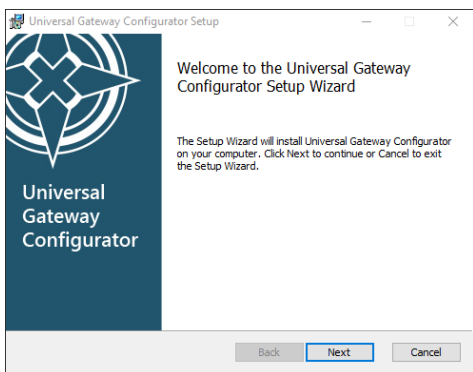
Universal Gateway - AV-UGW

Introduction

The purpose of this quick start guide is to present a brief summary of the steps involved in the installation of the Universal Gateway standalone assembly, from downloading the UGW Configuration Application to the physical installation of the enclosure itself.

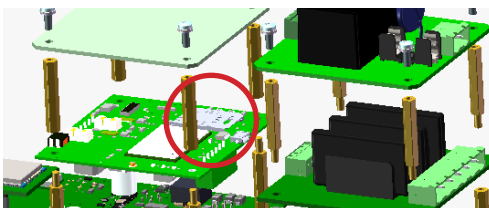
1 Download the UGW Configuration Application

Download the UGW Configuration Application onto a PC or laptop. Go through the steps as shown in the Setup Wizard to complete the installation.



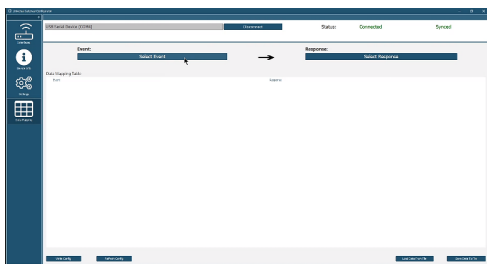
2 For GSM variants only: Install the SIM card into the UGW enclosure.

Remove the screws in the lid of the UGW enclosure using a size 3 Allen key and lift off the lid. Use a small flathead screwdriver to gently open the SIM card holder and use a pair of tweezers to insert the SIM card into the SIM card holder. Close the SIM card holder, replace the UGW enclosure lid and replace the screws.



3 Configure the UGW Unit using the UGW Configuration Application

After connecting AC or DC power to the enclosure, launch the UGW Configuration Application and connect the provided programming cable from the UGW enclosure to the PC or laptop. Map the applicable interfaces in the Data Mapping Table as required.

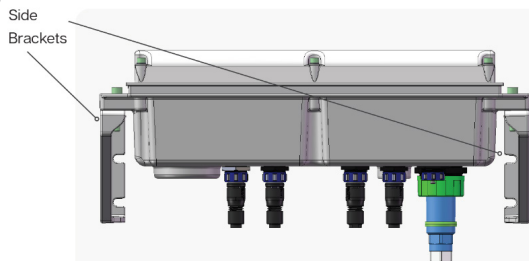


4 Attach mating connectors to the UGW base plate

The mating connectors are provided either standalone or pre-terminated as part of the optional cable kit for the UGW. Connectors can also be sourced directly by users. Consult the AV-UGW Installation and Service Manual for further information. The mating connector can be simply threaded into the appropriate ports underneath the unit. The connectors are not provided with the UGW unit. Cable kits of user defined lengths are available to purchase from Avlite. These can be simply connected to the UGW base plate as specified by the selected interfaces.

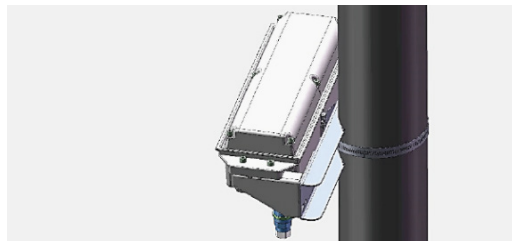
5 Mount the UGW Unit

Universal Gateway Unit can be wall or pole mounted. For wall mounting, the UGW can be attached to the wall via the pre-attached side brackets using the provided bolts.



*Base build shown

For pole mounting, attach the required mounting hardware (User or Avlite supplied) to the back of the UGW Unit. This assembly can then be mounted to the pole using steel strapping.



6 For SATCOM and/or RF Variants Only: Mount the Antennas

Attach the provided antennas to the antenna mounts. The antennas come with the required cabling to connect them to the UGW unit.

AV-UGW_QST_EN_V1-0